



## HOW TO USE YOUR FIRE PIT

### Step 1

Remove the nested flame ring and set it aside.

### Step 2

Start by placing your tinder, kindling and small wood pieces in the center of the fire pit.

**FOR BEST RESULTS, DO NOT OVERFILL WITH WOOD THAT COVERS OR EXTENDS ABOVE THE TOP AIR HOLES.**

### Step 3

Light your fire.

### Step 4

Place the flame ring back on top of the fire pit with the angled edges pointing upward.

**THIS WILL PROVIDE PROTECTION FROM THE WIND AND ENHANCE THE LOOK OF THE FLAMES.**

CORRECT



INCORRECT



### Step 5

As your ember bed gets hotter, start adding in 1-3 pieces of wood. As those catch, add enough wood to fill the burn chamber.

### Step 6

When you're ready to call it a night, let the fire pit burn out on its own.

### Step 7

After the fire pit has completely cooled, turn it over to empty the ash.

## STORAGE AND CARE

Caring for your fire pit correctly will prolong its look and usability.

After each use, wait until the unit has completely cooled down then turn the fire pit over to empty any remaining ash. If you want to wipe it down, use only a dry cloth.

It's important to keep rain and snow out of your fire pit. Solo Stove Shelter is a great cover option and can be purchased separately for all fire pits.

Ranger and Bonfire purchases also include a carrying case to help you take your fire pit along for the ride.

Due to extremely high temperatures, discoloration of the fire pit will occur and is considered normal. Stainless steel has an increased resistance to rust; however, it is not rust-proof.

Prolonged exposure to moisture may result in increased staining and/or rusting. Due to extremely high temperatures inside, the fire pit may show signs of staining/rust. This is normal and will not affect normal use.

## TIPS & GOOD THINGS TO KNOW

Use dry hard woods for best results.

When you first use your fire pit, the unique double-wall airflow within the unit will take approximately 5-15 minutes to achieve full efficiency. The more evenly your fire burns inside your fire pit, the more prominent the flame pattern showing the secondary combustion will appear.

Overfilling your fire pit above the top air holes will decrease efficiency and will produce more smoke.

Prolonged exposure to harsh weather will increase rust and discoloration.

## USER WARNINGS

1. Solo Stove fire pits are for outdoor use only and should not be used in a building, a garage, or any other enclosed area.
2. Solo Stove fire pits are extremely hot when in use. Never attempt to touch or move your fire pit during use or before it has completely cooled down.
3. Be especially careful not to lean up against or let any body part touch Solo Stove fire pits during use or after use until all fire, coals, and ashes are completely extinguished and it has completely cooled. Any direct contact may lead to serious injury whether accidental or otherwise. Do not lean any objects against Solo Stove fire pits.
4. Do not use Solo Stove fire pits for indoor heating. Toxic carbon monoxide can accumulate and cause asphyxiation and possibly death.
5. Solo Stove fire pits are not for commercial use.
6. Do not operate Solo Stove fire pits if under the age of 18 unless under strict adult supervision. Solo Stove fire pits are not toys.
7. Never leave Solo Stove fire pits unattended, especially when children and pets are nearby.
8. Be aware of potential damage to people and property from embers.
9. Solo Stove fire pits are not to be used in a boat or recreational vehicle.
10. Always use Solo Stove fire pits in accordance with all applicable local, state, and national codes. Contact your local fire department for details.
11. When using Solo Stove fire pits, exercise the same precautions you would with any open fire.
12. The use of alcohol, prescription, or non-prescription drugs may impair the consumer's ability to operate Solo Stove fire pits safely.
13. Do not use Solo Stove fire pits until you have read the operating instructions and user warnings.
14. Solo Stove fire pits are designed for use with standard firewood logs and may not function properly with other fuel sources.
15. Do not alter or modify Solo Stove fire pits in any manner.
16. Do not store or use gasoline or any other flammable vapors or liquids in the vicinity of Solo Stove fire pits.
17. Do not store or use LP gas cylinders within 30 feet of Solo Stove fire pits while in operation.
18. Do not use Solo Stove fire pits near automobiles, trucks, vans, or recreational vehicles.
19. Do not use Solo Stove fire pits in any explosive environment. Keep the area around Solo Stove fire pits clear and free of any combustible materials, gasoline, or any flammable liquids.
20. Do not use Solo Stove fire pits under any overhead or near any unprotected combustible constructions. Avoid using or near any overhanging trees or shrubs.
21. Always use Solo Stove fire pits on a level noncombustible surface. Use on wood or composite decks at your own risk.
22. Do not wear flammable or loose clothing when operating Solo Stove fire pits.
23. Do not use Solo Stove fire pits in windy conditions.
24. Do not use gasoline, kerosene, diesel fuel, lighter fluid, alcohol, or any other flammable liquid to light or relight Solo Stove fire pits.
25. Keep all electrical cords away from Solo Stove fire pits.
26. All surfaces of Solo Stove fire pits are extremely hot when in operation. To avoid burns and serious injury, do not touch your Solo Stove fire pit until the fire is completely out and it has completely cooled. Never touch the coals or ash to see if they're still warm.
27. Do not attempt to move or store your Solo Stove fire pit until all fire, coals, and ashes are completely extinguished and the unit has completely cooled.
28. Do not lean over Solo Stove fire pits when lighting or when they are in use.
29. After a period of nonuse, check your Solo Stove fire pit for signs of damage and creosote buildup. Do not operate until the necessary repairs and/or cleanup is done.
30. Do not use water to extinguish the fire as this could cause damage to the fire pit as well as injury to the user.
31. Serious injury, death, and/or property damage may occur if the above instructions are not followed exactly.

**FOR QUESTIONS OR COMMENTS, PLEASE VISIT [SOLOSTOVE.COM](https://www.solostove.com) OR EMAIL US AT [HELP@SOLOSTOVE.COM](mailto:HELP@SOLOSTOVE.COM).**



## HOW TO USE YOUR SOLO STOVE SHELTER

### Step 1

Open the bag and turn the Solo Stove Shelter upside down. Open the support stay, fanning it out into the shape of an "X".



### Step 2

Insert the rounded ends of the support stay into the four (4) corresponding loops on the underside of the Solo Stove Shelter. Fasten the center of the support stay securely in place.



### Step 3

Flip the Solo Stove Shelter back to its upright position and place it on top of your fire pit.



## TIPS & GOOD THINGS TO KNOW

Make sure your support stays are positioned to create a dome shape over your fire pit.

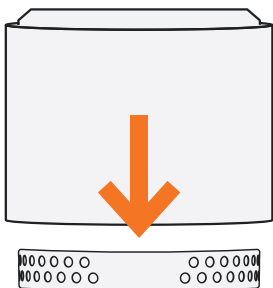
If you are having trouble placing your Solo Stove Shelter over your fire pit, we've found leaving it out in the sun for 15-30 minute prior to covering will allow the material to move more freely. (If you live where the sun doesn't like to visit, simply letting it warm up to room temperature will do the trick!)



## HOW TO USE YOUR FIRE PIT STAND

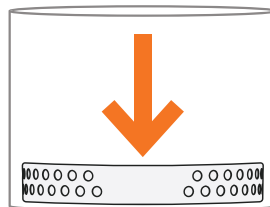
### Step 1

Use your stand to provide extra protection to heat sensitive surfaces such as wood decks. Before lighting your fire pit, place the stand on a level surface and center your fire pit on top of the stand. Light your fire pit and enjoy!

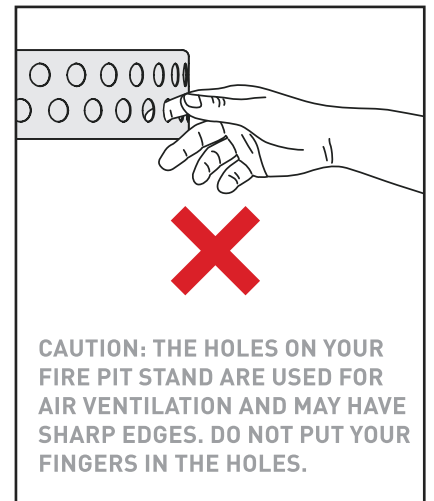


### Step 2

For easy storage, place your fire pit stand directly inside your fire pit. Always place your fire pit in its carrying case or under its weatherproof cover (certain models) when not in use.



### SAFETY WARNING



## TIPS & GOOD THINGS TO KNOW

Your fire pit stand was designed to elevate your fire pit away from heat sensitive surfaces such as wood decks. Fire pits burn extremely hot and hot air may still gather underneath. Please use with caution and at your own risk.



## HOW TO USE YOUR SOLO STOVE SHIELD

### Step 1

Rotate the lid so that its handles are not positioned directly on top of the base handles.

### Step 2

Light fire with flame ring in the correct, up-right position.

### Step 3

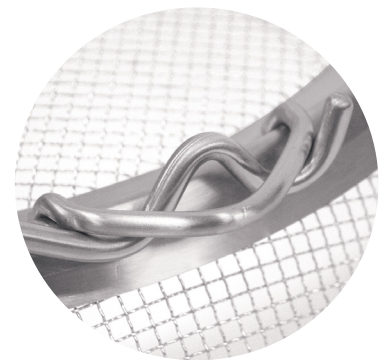
Use the included tools to rest the Shield on top of the flame ring.



CORRECT



INCORRECT



## TIPS & GOOD THINGS TO KNOW

- To add additional wood to your fire, remove and replace the lid using the included tools.
- Always be sure to use the included tools to handle the Shield while in use.
- If you purchased a Solo Stove fire pit prior to July 2019, you'll need a replacement flame ring. You can get this by clicking 'Contact Us' and completing the form at [www.solostove.com](http://www.solostove.com). You'll know whether you have an updated flame ring or not because it includes an embossed flame logo. (Older versions will not allow the Shield to fit tightly.)

FOR QUESTIONS OR COMMENTS, PLEASE VISIT [SOLOSTOVE.COM](http://SOLOSTOVE.COM) OR EMAIL US AT [HELP@SOLOSTOVE.COM](mailto:HELP@SOLOSTOVE.COM).